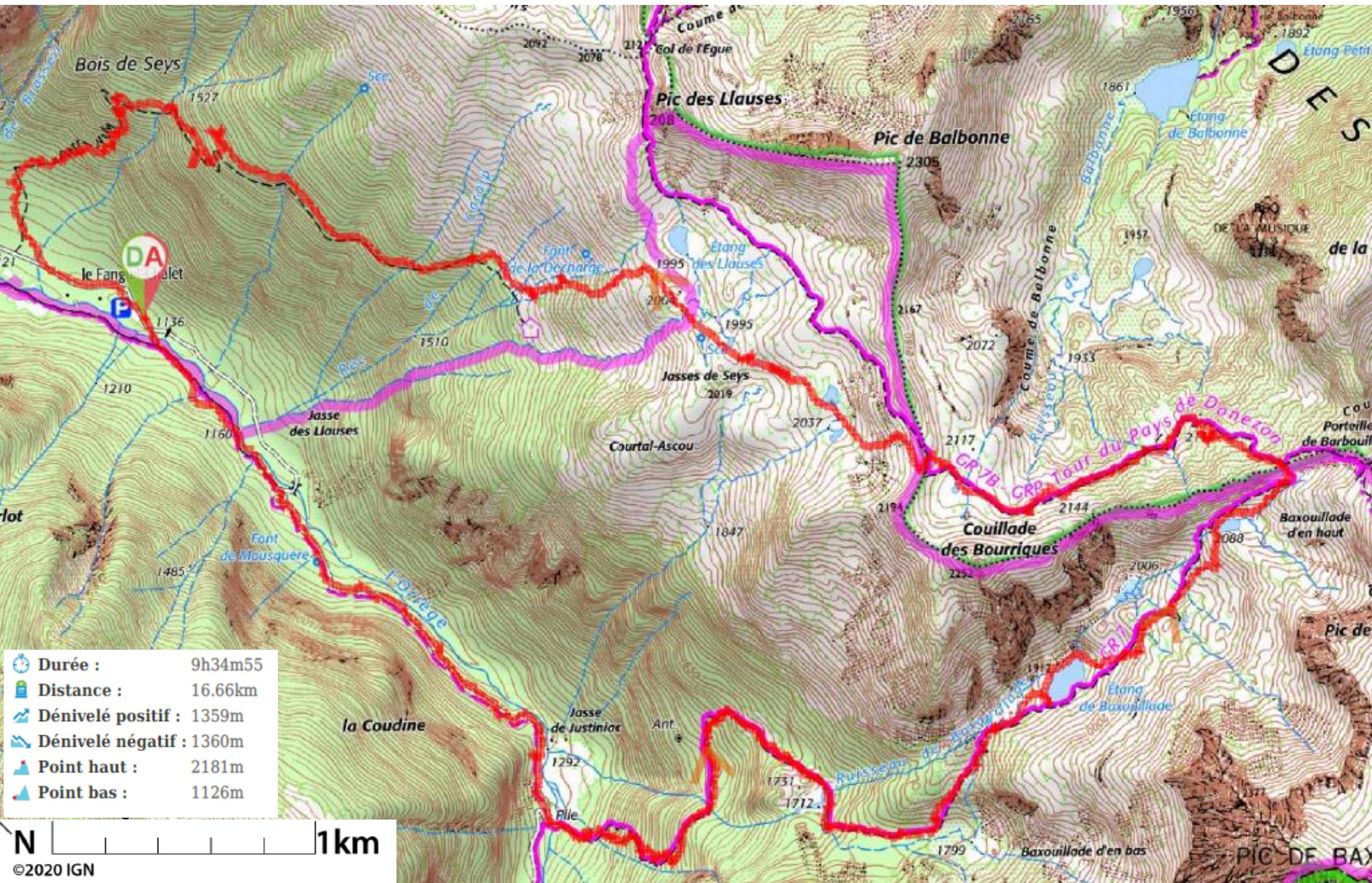





Boucle Parking Fanguil (Forges d'Orlu) – Justiniac- Etgs de Baxouillade – Col de Barbouillère – GR7B – Col Couillade des Bourriques – Jasse de Seys - Fanguil



 Durée :	9h34m55
 Distance :	16.66km
 Dénivelé positif :	1359m
 Dénivelé négatif :	1360m
 Point haut :	2181m
 Point bas :	1126m